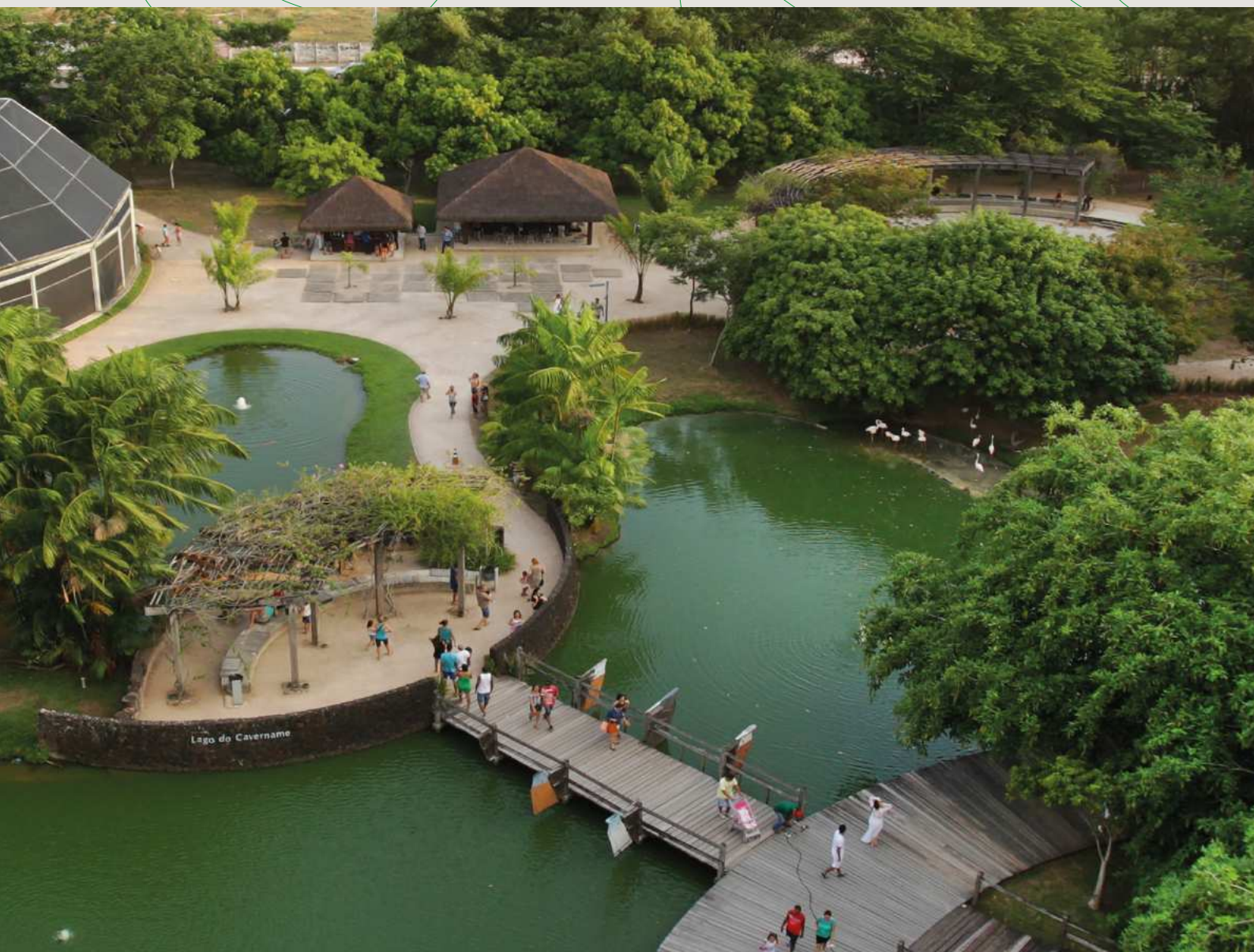


COP30

From 10 a 21
November 2025

Transport Guide



United Nations
Climate Change



GOVERNO DO
BRASIL
DO LADO DO POVO BRASILEIRO

INDEX

1. General Map Of Parque da Cidade

Transport Informations	4
------------------------	---

2. Blue Zone Transport

Taxi – Operation and location information	5
---	---

Transport by App – Operation and location informations	6
--	---

Active Mobility – Operation and location informations	7
---	---

Private Vehicles – Pick-up and drop-off areas	8
---	---

Public Bus – Operation information and locations	9
--	---

3. COP30 Dedicated Buses

Transportation Informations	10
-----------------------------	----

Line frequency	11
----------------	----

Identity of the COP Buses	12
---------------------------	----

LINE 1 COP - Outeiro	13
------------------------	----

LINE 2 Circular - Parque	14
----------------------------	----

LINE 3 COP - Pte. Vargas	15
----------------------------	----

LINE 4 COP - Airport-Outeiro	16
--------------------------------	----

LINE 5 COP - Condos	17
-----------------------	----

LINE 6 COP - Pedro Miranda	18
------------------------------	----

LINE 7 COP - Mário Covas	19
----------------------------	----

LINE 8 COP - Ver-O-Peso	20
---------------------------	----



LINE 9 COP - Icoaraci	21
LINE 10 COP - Jurunas	22
LINE 11 COP - Marambaia-UFPA	23
LINE 12 COP - Castanhal	24
LINE 13 COP - Benevides	25
LINE 14 COP - Mosqueiro	26
LINE 15 COP - Mosqueiro Vila	27

4.Green Zone Transport

Taxi – Operation and location informations	28
Transport by App – Operation and location informations	29
Active Mobility – Operation and location information	30
Private Vehicles – Pick-up and drop-off areas	31
Public Bus – Operation information and locations	32



1. General Map Of Parque da Cidade

Transport Informations



The Parque da Cidade will be one of the main hubs of activities at COP30 in Belém, housing essential structures for the event. Located in an easily accessible area, between Júlio César, Senador Lemos and Brigadeiro Protásio avenues, the park will have a special organization for the flow of participants, visitors and service providers.

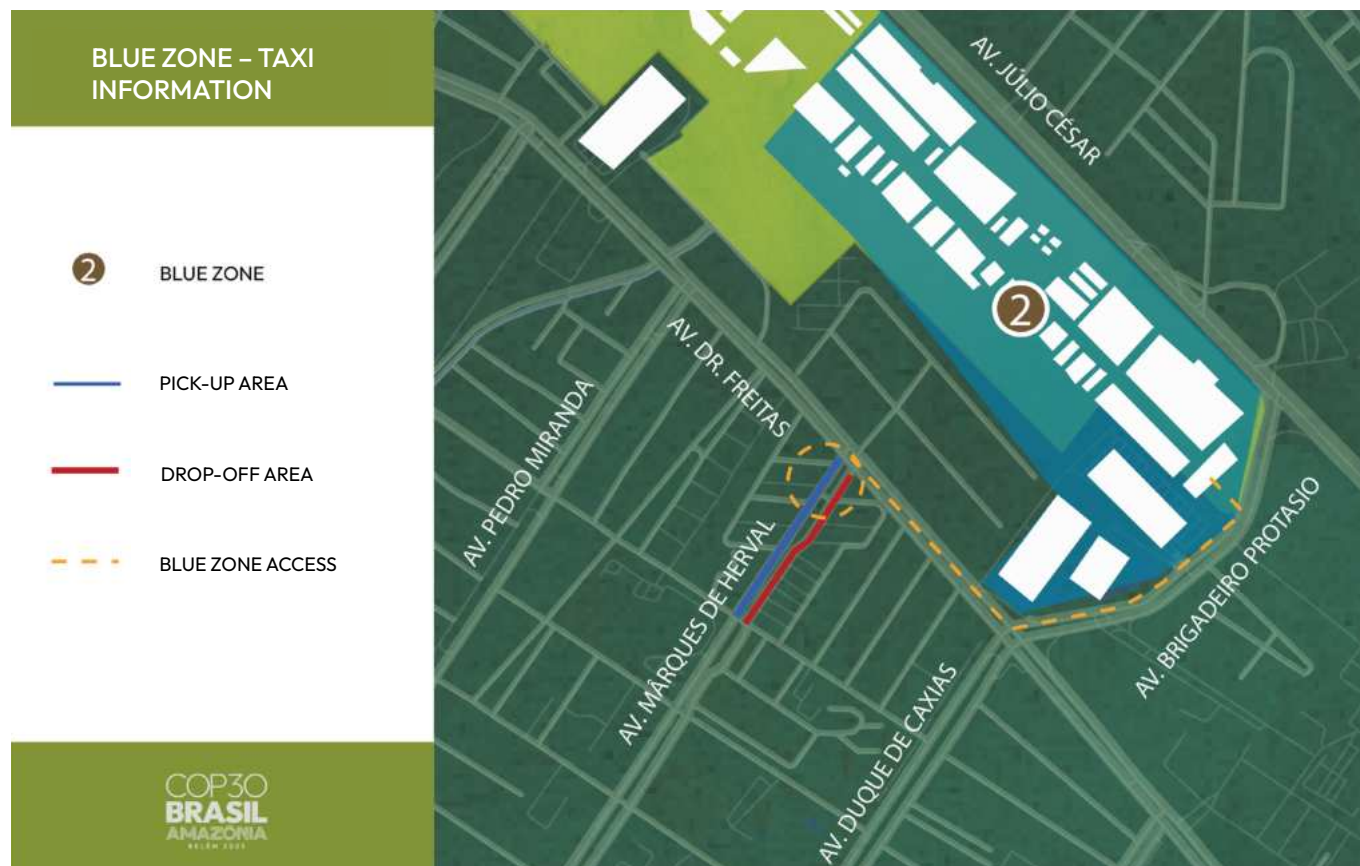
The Blue Zone, an area of restricted access for official delegations, authorities and accredited press, will be positioned in the central portion of the Parque da Cidade, with the main entrance on Brigadeiro Protásio Avenue. This sector will concentrate the conference pavilions, auditoriums, meeting rooms and institutional spaces of the United Nations and the Federal Government.

The Green Zone, aimed at the general public and the parallel actions of the event, will occupy the surroundings of the park and adjacent areas, with preferential entrance through Avenida Senador Lemos, where booths, exhibition spaces, cultural activities and civil society initiatives will be distributed.

The accesses were designed to ensure fluidity and safety, with signposted routes for pedestrians, cyclists, public transport and accredited vehicles. There will be integration with dedicated bus lines, specific areas for taxis and app cars, as well as strategically positioned boarding and disembarking points.

2.Blue Zone Transport

Taxi – Operation and location information



During the event, there will be designated pick-up and drop-off areas for taxi near the access gates at Parque da Cidade.

the user must go to Avenida Visconde de Inhaúma, between Avenida Doutor Freitas and Travessa Alferes Costa.

24-HOUR OPERATION



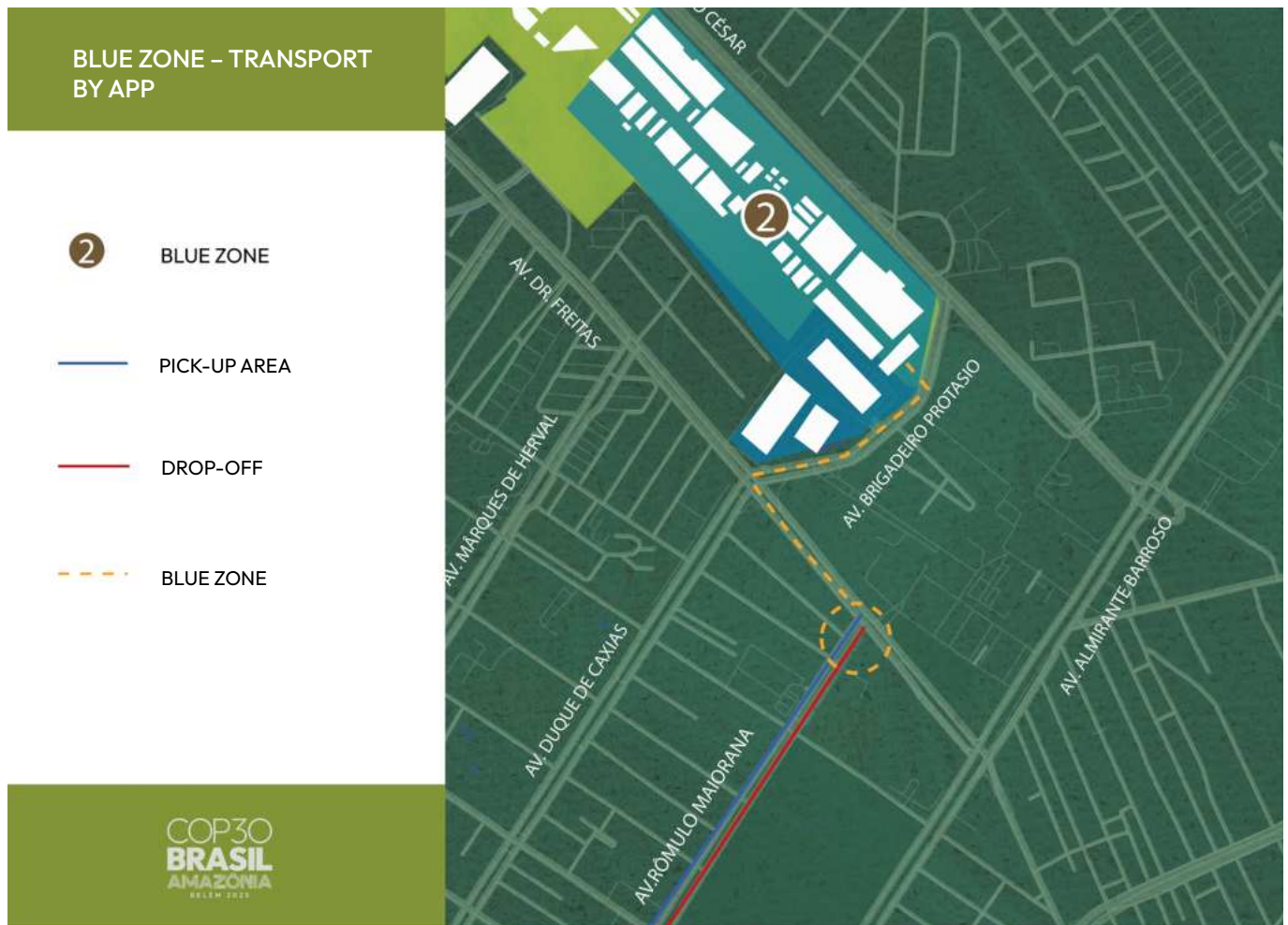
United Nations
Climate Change



GOVERNO DO
BRASIL
DO LADO DO POVO BRASILEIRO

2. Blue Zone Transport

Transport by App – Operation and location informations



During the event, there will be designated pick-up and drop-off areas for transport by app near the access gates at Parque da Cidade.

The user must go to Avenida Rômulo Maiorana.

Uber – Download the app or go to: <https://www.uber.com/br/pt-br/>

99 – Download the app or go to: <https://99app.com/>

24-HOUR OPERATION



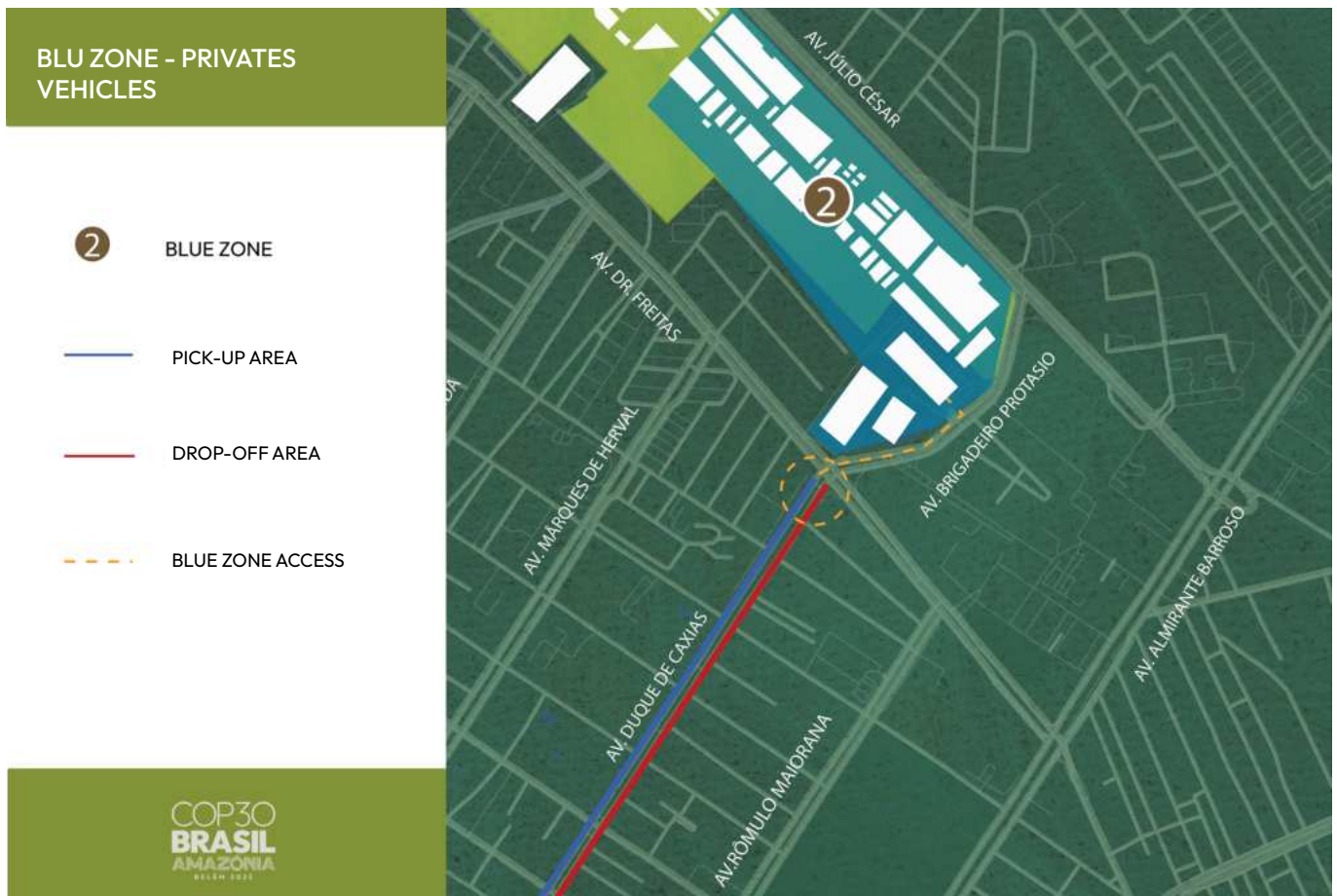
United Nations
Climate Change



GOVERNO DO
BRASIL
DO LADO DO POVO BRASILEIRO

2. Blue Zone Transport

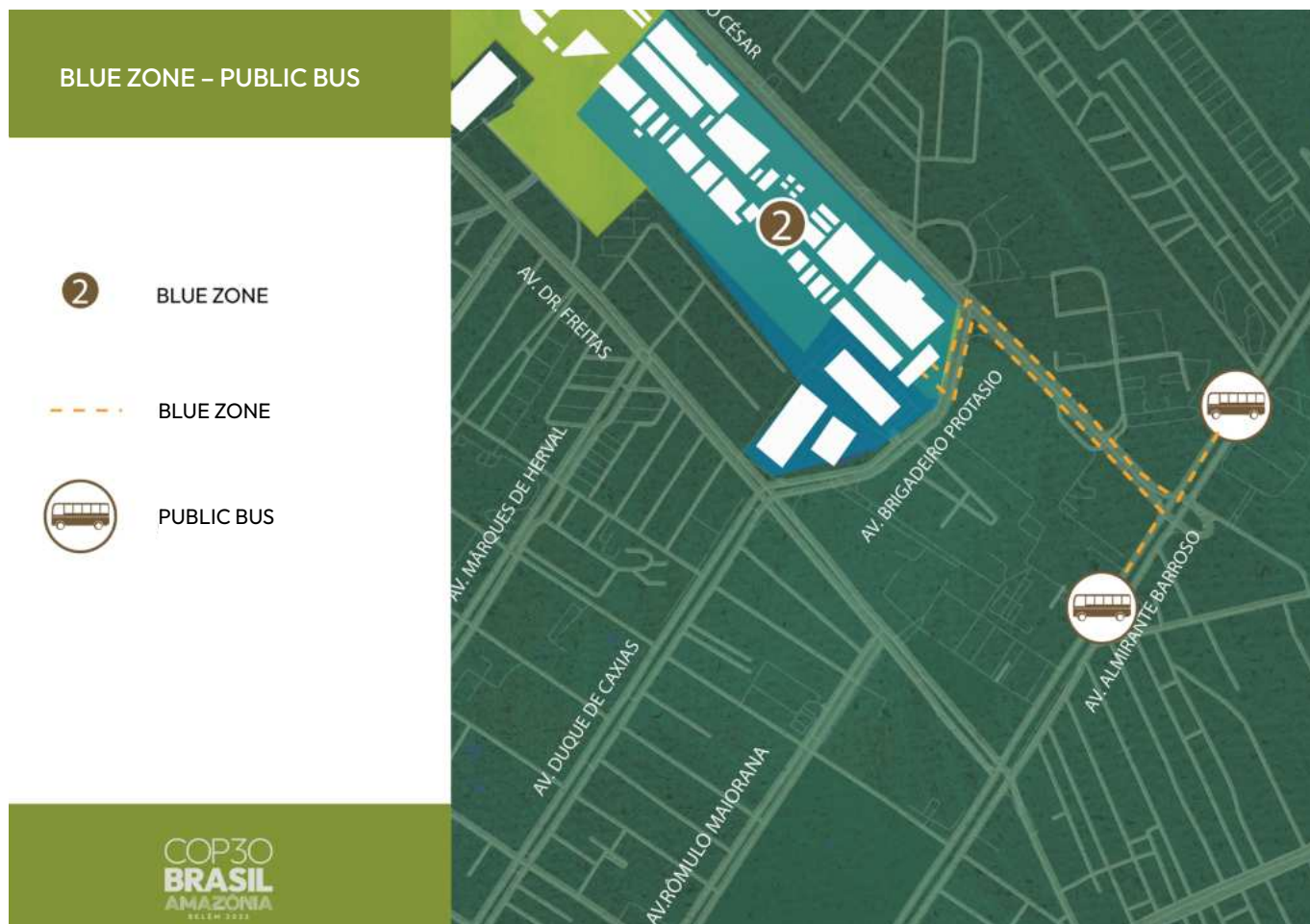
Private Vehicles – Pick-up and drop-off areas



There will be no parking at the event site. That's why we recommend using the dedicated COP30 buses. If you use your own vehicle (car, bus or van), the boarding/dise­mbarking will be at Av. Duque de Caxias. The area is intended only for boarding and dis­embarking, without permanence.

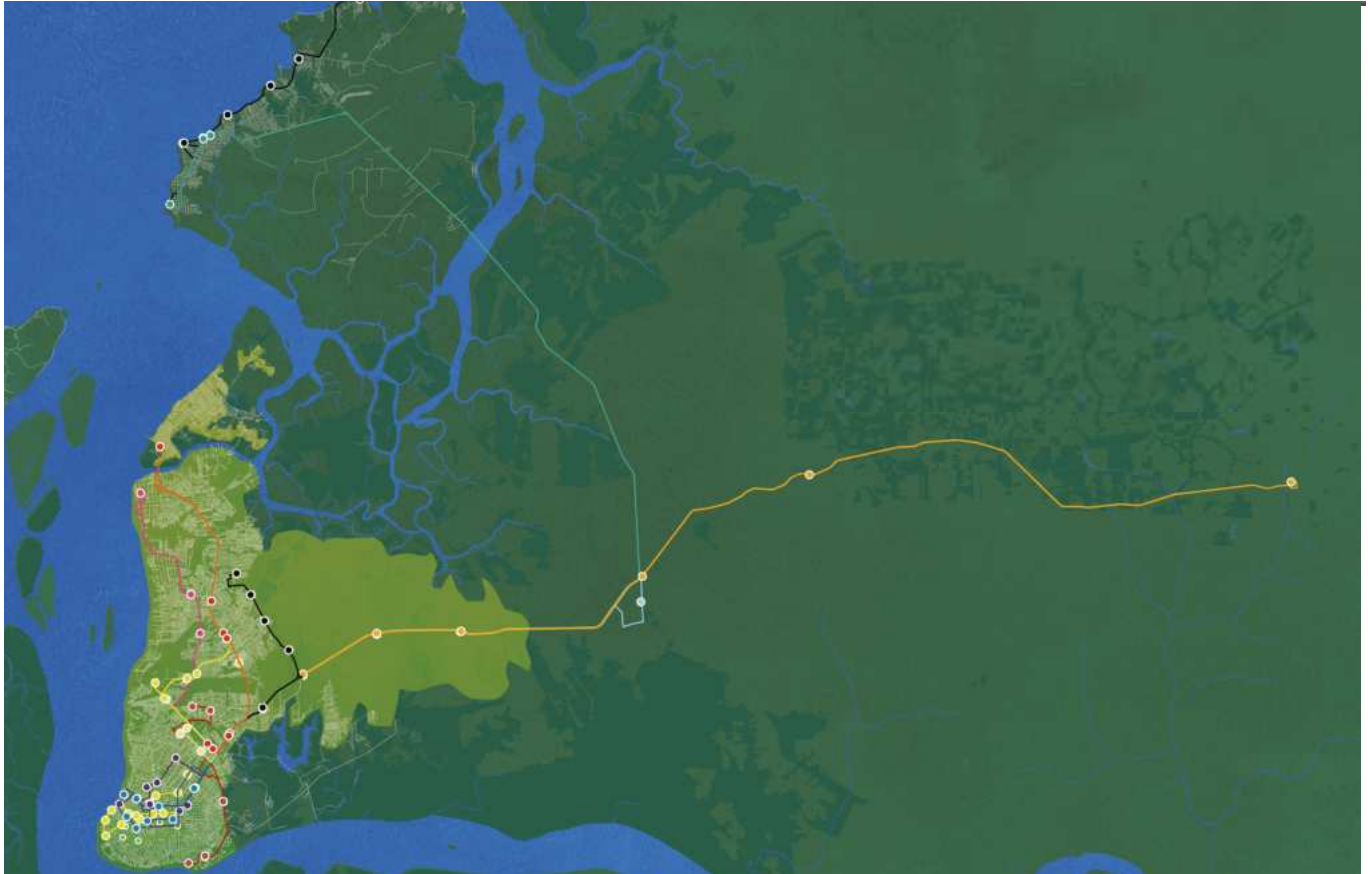
2. Blue Zone Transport

Public Bus – Operation information and locations



The Belém city hall buses are an option for those who are staying in places outside the coverage of the dedicated buses. The nearest indicated disembarkation point to the event is Av. Almirante Barroso, between Av. Júlio César and Av. Dr. Freitas.

For more information on itineraries and fares:
<https://seguranca.belem.pa.gov.br/linhas/>



3. COP30 Dedicated Buses

Transport information

During COP30, the transportation of participants will be carried out by an exclusive system of 15 bus lines aimed at accredited members. To access the stopping points, which will be signposted, it is necessary to present the Blue Zone credential or letter from the UNFCCC.

The main access routes include Nazaré, José Malcher, Almirante Barroso and Augusto Montenegro avenues, in addition to BR-316. The system will serve Belém and the Metropolitan Region, including Icoaraci, Outeiro, Mosqueiro, Ananindeua, Marituba, Santa Izabel, Benevides and Castanhal.

The operation will be uninterrupted, 24 hours a day, between November 1st and 23rd, ensuring mobility and safety throughout the conference period.

For more information on itineraries and stopping points, download the app:

Android: <https://play.google.com/store/apps/details?id=br.bus2.cop30>

iOS: <https://apps.apple.com/br/app/cop30-app-do-passageiro/id6754283025>

3.COP30 Dedicated Buses

Line frequency

DURING THE PERIOD (NOVEMBER 1 TO 23, 2025)		
LINE	HOUR (PEAK)	TIME (PEAK)
COP - OUTEIRO (TRAIN OF 5) (gutter)	6:00 -10:00 h	Every 5 minutes
COP - Circular - Parque	6:00 -10:00 h	Every 5 minutes
COP - PTE. VARGAS	6:00 -10:00 h	Every 10 minutes
COP - AIRPORT-OUTEIRO (channel)	6:00 -10:00 h	Every 6 minutes
COP - CONDOS	6:00 -10:00 h	Every 6 minutes
COP - P MIRANDA	6:00 -10:00 h	Every 6 minutes
COP - MÁRIO COVAS	6:00 -10:00 h	Every 6 minutes
COP - VER O PESO	6:00 -10:00 h	Every 6 minutes
COP - ICOARACI	6:00 -10:00 h	Every 6 minutes
COP - JURUNAS	6:00 -10:00 h	Every 6 minutes
COP - MARAMBAIA-UFPA	6:00 -10:00 h	Every 6 minutes
COP - CASTANHAL (gutter)	6:00 -10:00 h	Every 6 minutes
COP - BENEVIDES	6:00 -10:00 h	A cada 6 minutos
COP - MOSQUEIRO (gutter)	6:00 -10:00 h	Every 6 minutes
COP - MOSQUEIRO - VILA	6:00 -10:00 h	Every 6 minutes

Observation:

HOUR	FREQUENCY	LINES
10:00 – 17:00 h	Every 30 minutes	All lines
20:00 – 22:00 h	Every 30 minutes	All lines except the lines: COP – Castanhal, COP – Benevides, COP – Mosqueiro and Mosqueiro Vila which will pass every 60 minutes.
22:00 – 06:00 h	Every 60 minutes	All lines



3.COP30 Dedicated Buses

COP30 Bus

ILLUSTRATIVE EXAMPLE



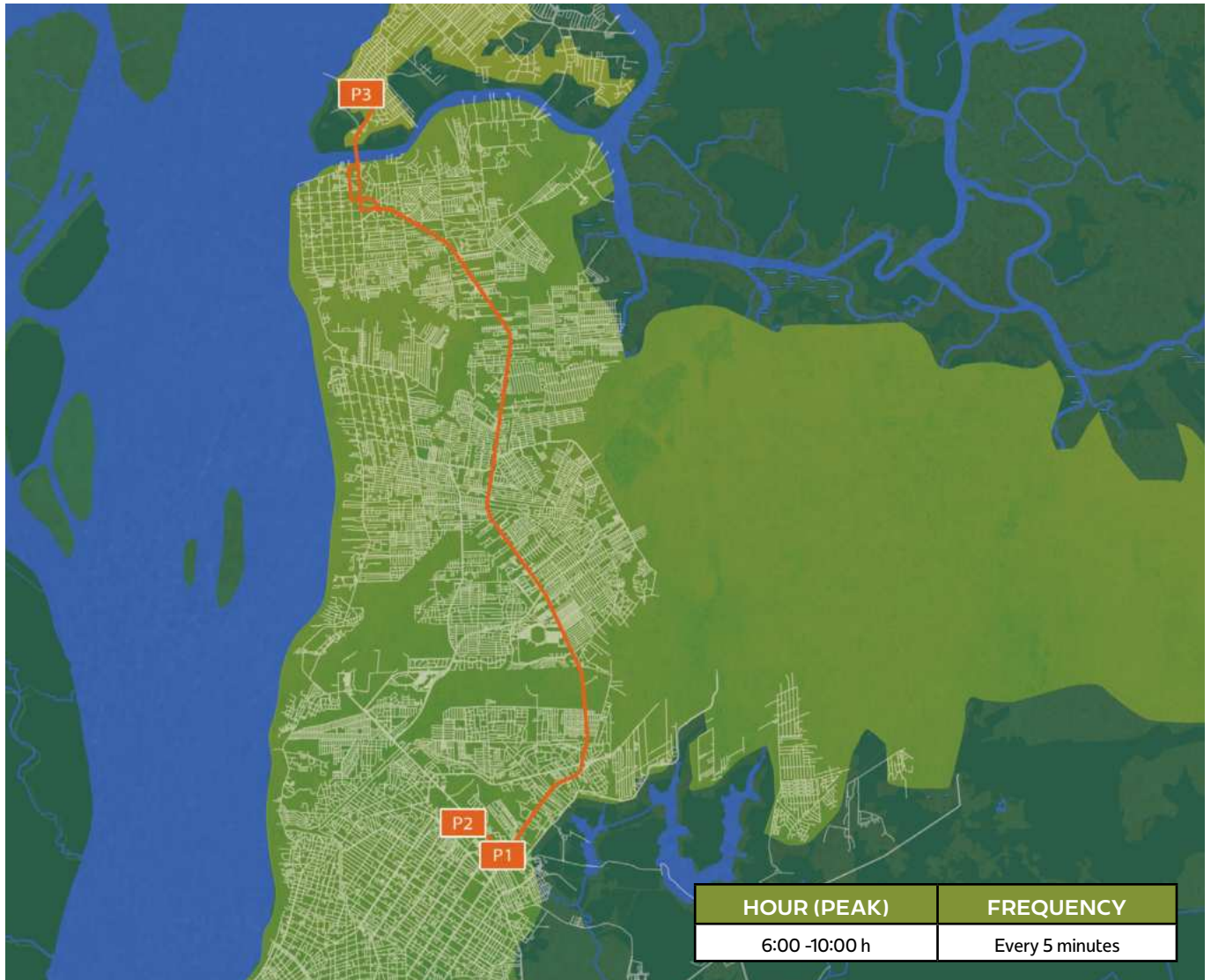
The buses operating on the dedicated COP30 routes will feature an exclusive design, ensuring easy identification for event participants and visitors. The entire fleet will be characterized by the application of the official COP30 branding.



United Nations
Climate Change



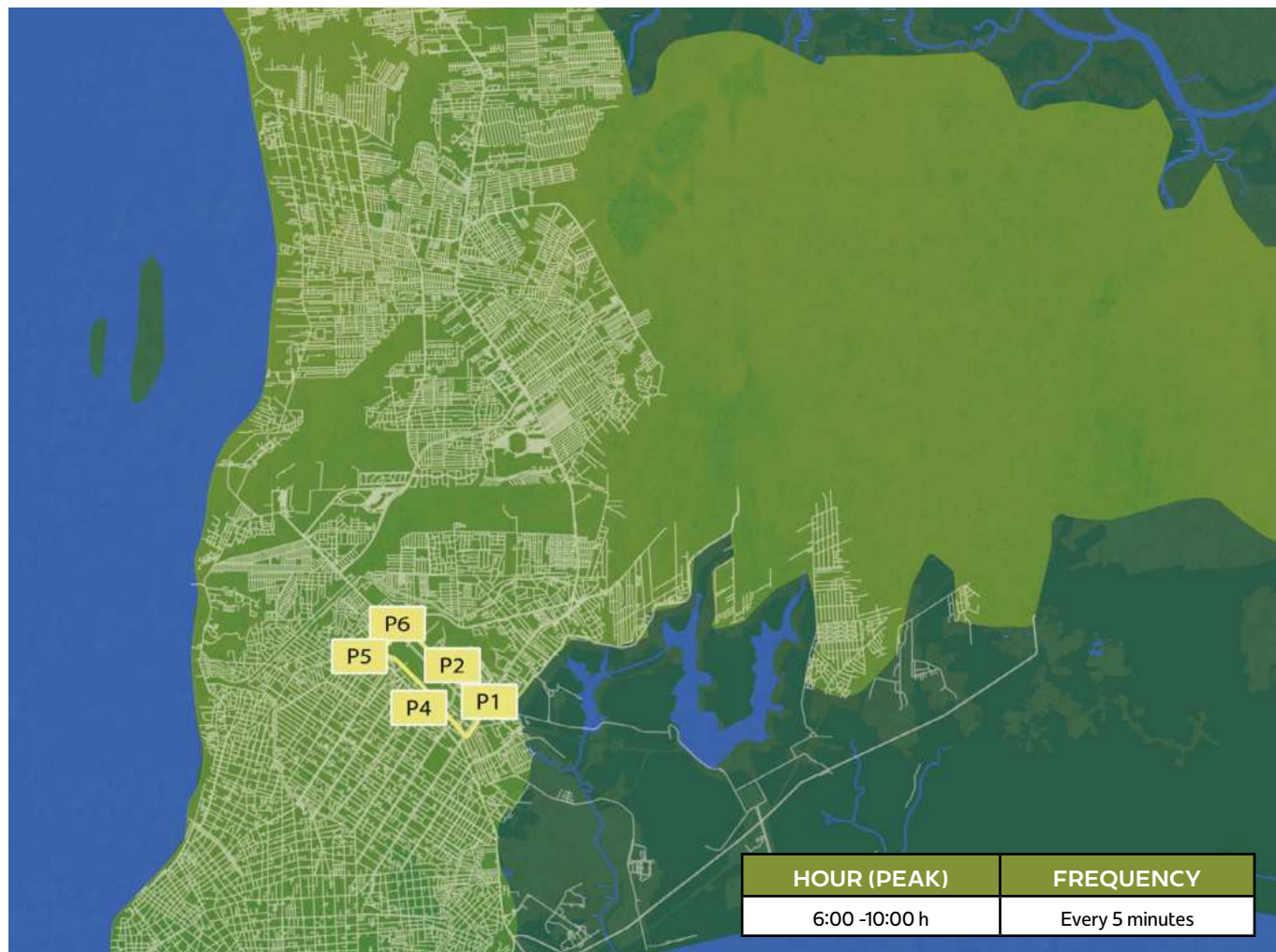
GOVERNO DO
BRASIL
DO LADO DO POVO BRASILEIRO



3. COP30 Dedicated Buses

LINE 1 | COP - Outeiro

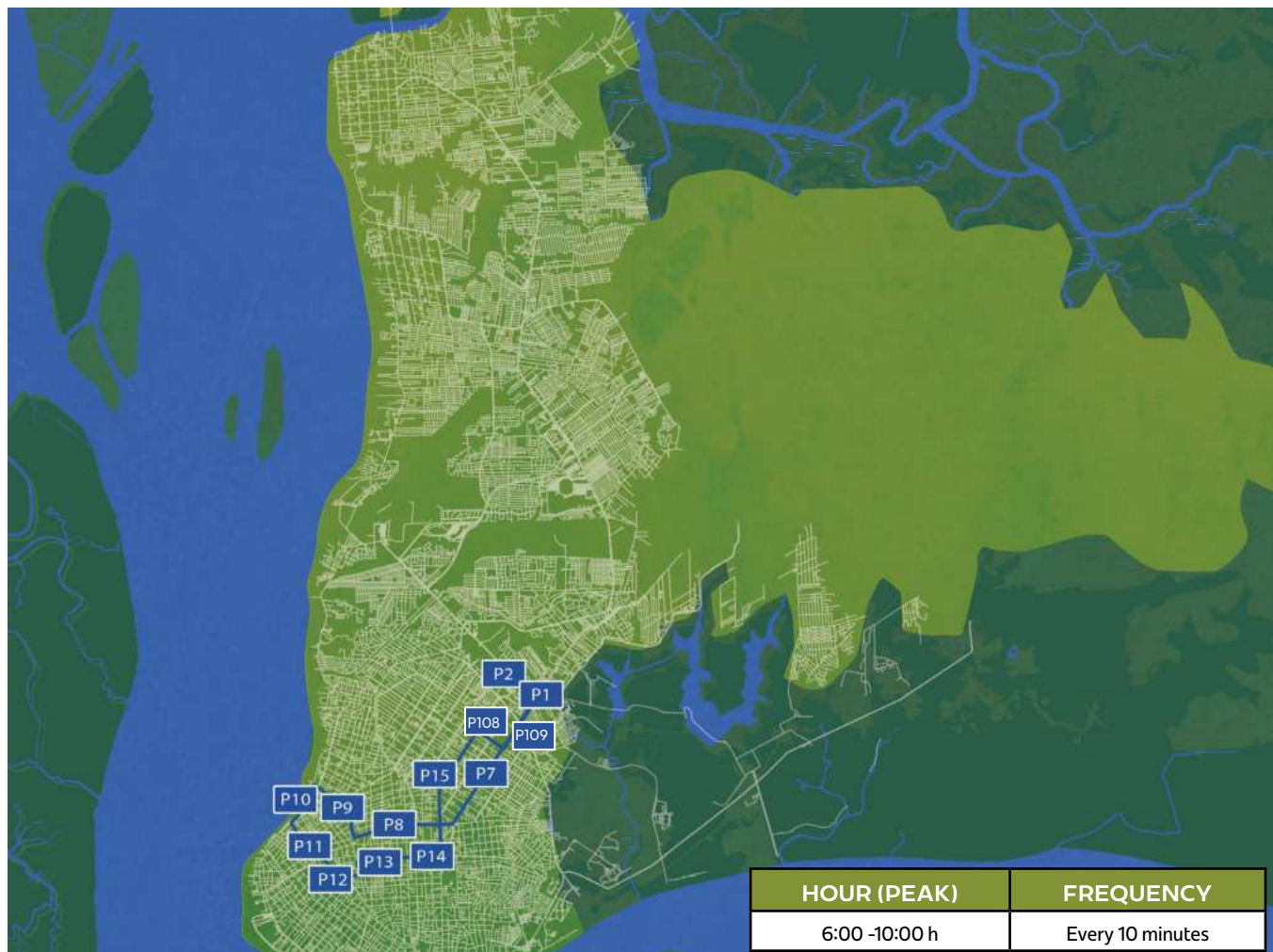
- P1 Start of the Line
- P2 End of the Line
- P3 Terminal de Outeiro - CDP



3. COP30 Dedicated Buses

LINE 2 | Circular - Parque

- P1 Start of the Line
- P2 End of the Lines
- P4 Av. Dr. Freitas x Duque de Caxias
- P5 Av. Senador Lemos x Av. Dr. Freitas
- P6 Av. Senador Lemos x Av. Pedro Álvares Cabral



3. COP30 Dedicated Buses

LINE 3 | COP - Pte. Vargas

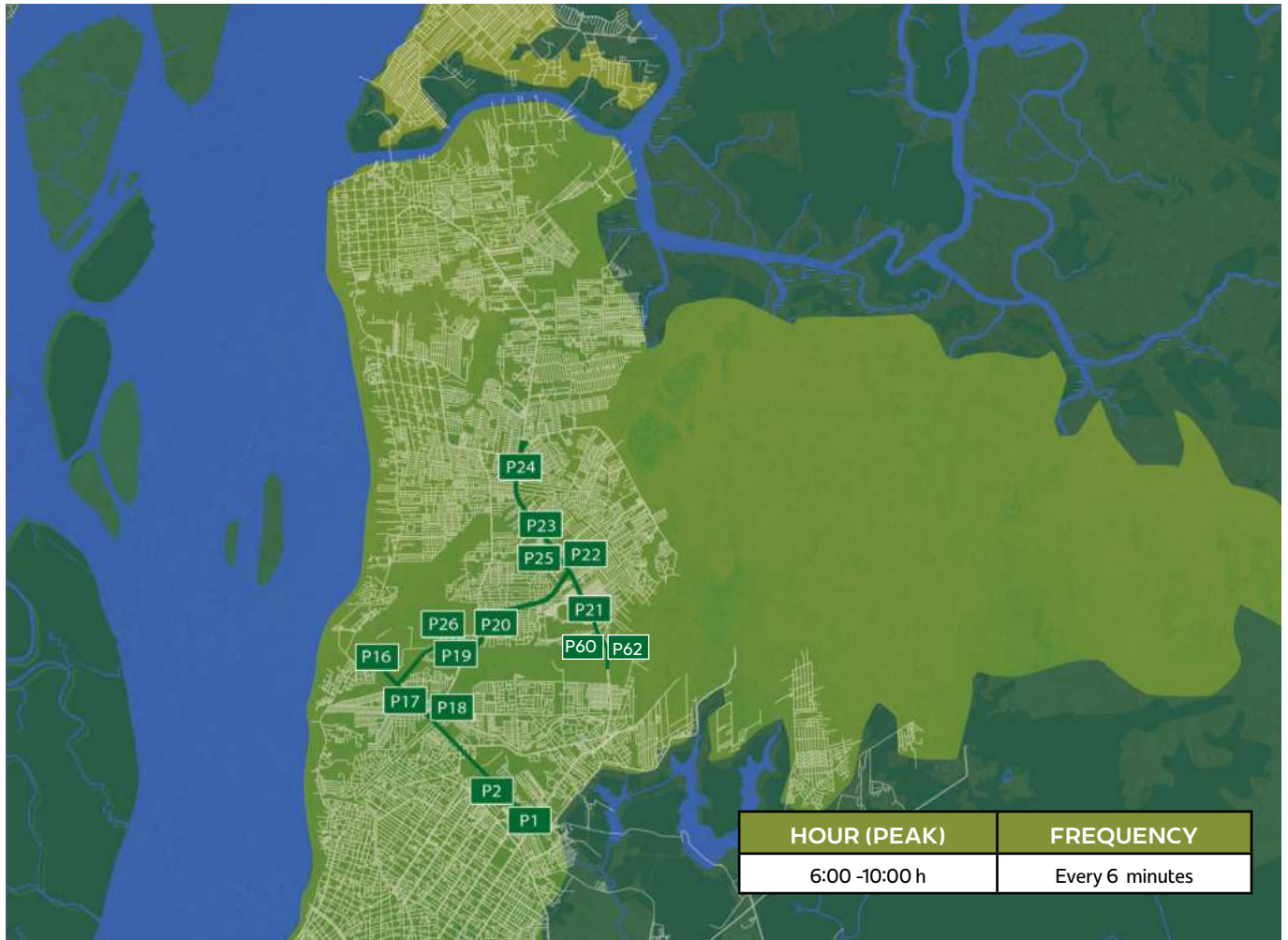
- P1 Start of the Line
- P2 End of the Lines
- P7 Av. Alm. Barroso x Tv. Timbó
- P8 Av. José Malcher x Alcindo Cacela
- P9 Av. Visconde de Souza Franco x Manuel Barata
- P10 Av. Marechal Hermes x Rui Barbosa
- P11 Av. Presidente Vargas x Silva Santos
- P12 Praça Batista Campos
- P13 Av. Gentil Bitencourt x Generalissimo Deodoro
- P14 Av. Gentil Bitencourt x 14 de Abril
- P15 Av. Duque de Caxias x Antonio Baena
- P108 Av. Almirante Barroso x Tv. Dr. Freitas
- P109 Av. Almirante Barroso x Bosque Rodrigues Alves



3. COP30 Dedicated Buses

LINE 4 | COP - Airport-Outeiro

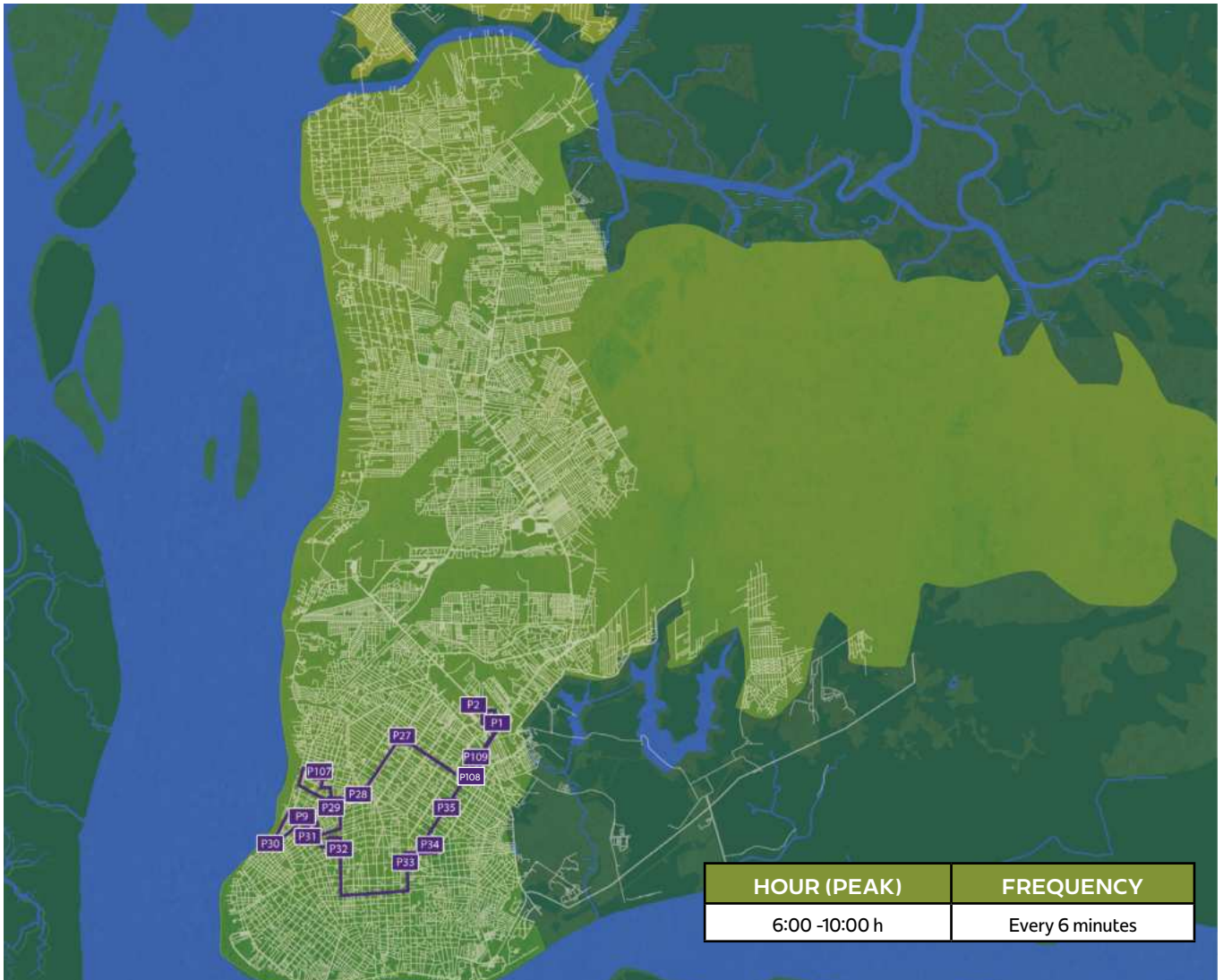
- P1 Start of the Line
- P3 Terminal de Outeiro - CDP
- P16 Aeroporto Val-de-Cans



3. COP30 Dedicated Buses

LINE 5 | COP - Condos

- P1 Start of the Line
- P2 End of the Lines
- P16 Aeroporto Val-de-Cans
- P17 Av. Julio César x Praça Dom Mario
- P18 Av. Júlio César x Av. Brasil
- P19 Rod. Paulo Frota x Shopping Grão Pará
- P20 Av Centenário x Cond. Água Cristal
- P21 Rod. Augusto Montenegro x Detran
- P22 Rod. Augusto Montenegro x Cond. Montenegro Boulevard
- P23 Rod. Augusto Montenegro x Cond. Greenville I
- P24 Rod. Augusto Montenegro x Cond. Greenville II
- P25 Av. Júlio César x Av. Brasil
- P26 Rod. Paulo Frota x Cond. Cristal Ville
- P60 Rod. Augusto Montenegro x Condomínio Fit Mirante
- P62 Rod. Augusto Montenegro x Rod. Transcoqueiro



3. COP30 Dedicated Buses

LINE 6 | COP - Pedro Miranda

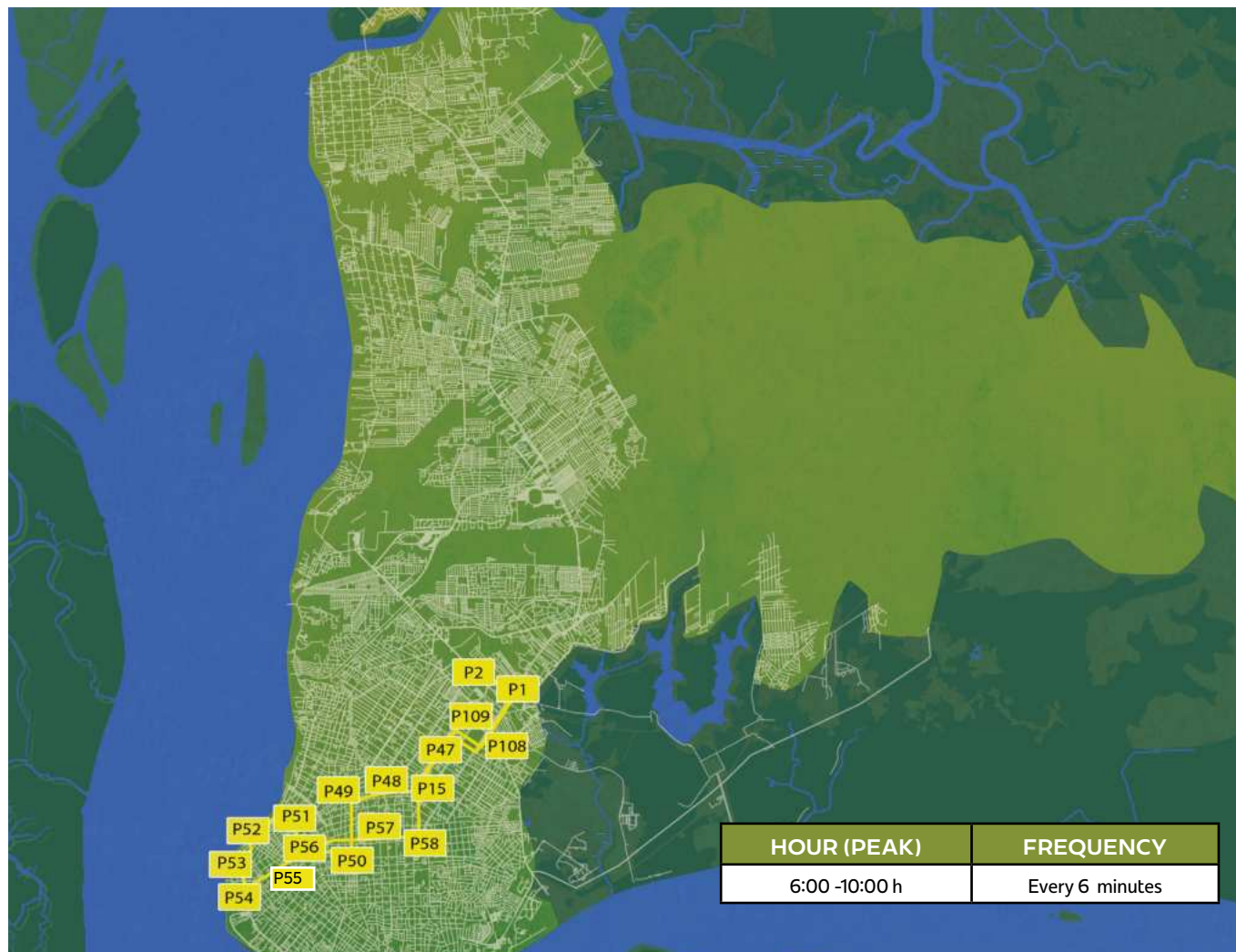
- P1 Start of the Line
- P2 End of the Lines
- P9 Av. Visconde de Souza Franco x R. Sen. Manuel Barata
- P27 Tv. Angustura x Av. Pedro Miranda
- P28 R. Ferreira Pena x Av. Alcindo Cacela
- P29 Tv. Dom Pedro I x R. Curuça
- P30 R. Municipalidade x Tv. Frei Gil de Vilanova
- P31 Av. Visconde de Souza Franco x R. Ó de Almeida
- P32 R. Boa Ventura x Tv. Dom Romualdo
- P33 Av. Almirante Barroso x Av. José Bonifácio
- P34 Tv. Nina Ribeiro x Av. Ceará
- P35 Av. Alm. Barroso x Tv. Vileta
- P107 Jose Pio x Rua Municipalidade
- P108 Av. Almirante Barroso x Tv. Dr. Enéas



3. COP30 Dedicated Buses

LINE 7 | COP - Mário Covas

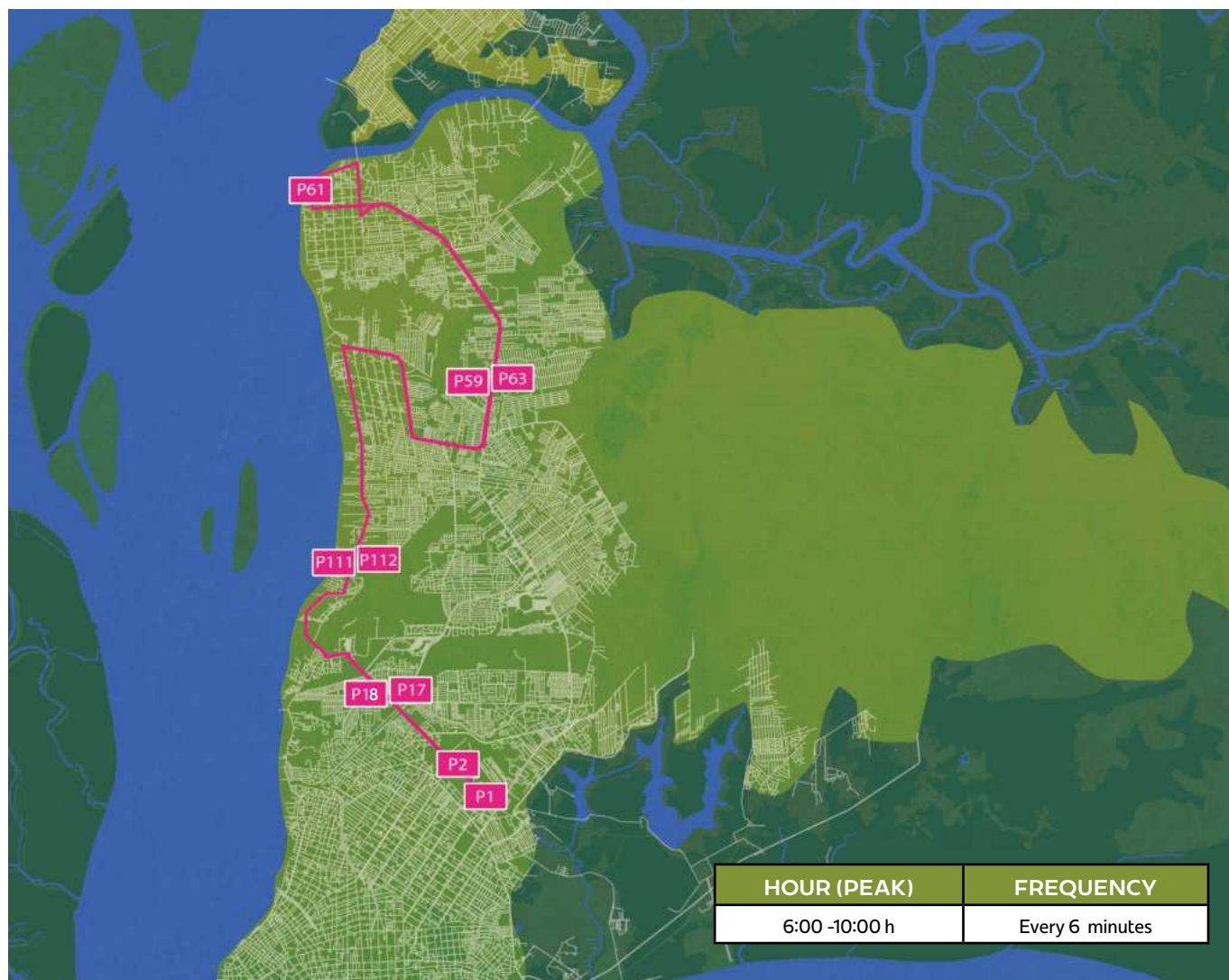
- P1 Start of the Line
- P2 End of the Lines
- P36 Av. Alm Barroso x Pedro Amazonas
- P37 BR316 x Mix Importados
- P38 Rod. Mario Covas x Hotel Riviera Damazonia
- P39 Rod. Mario Covas x Park Itália
- P40 Rod. Mário Covas x Av. São Pedro
- P41 Parque dos Igarapés
- P42 Rod. Mário Covas x Pass. Canaã
- P43 Rod. Mario Covas x Hotel Gold Martan
- P44 Rod. Mario Covas x Hotel Privilege
- P45 BR316 x Hotel Hollyday Inn
- P46 Av. Alm. Barroso x 2º BIS



3. COP30 Dedicated Buses

LINE 8 | COP - Ver-O-Peso

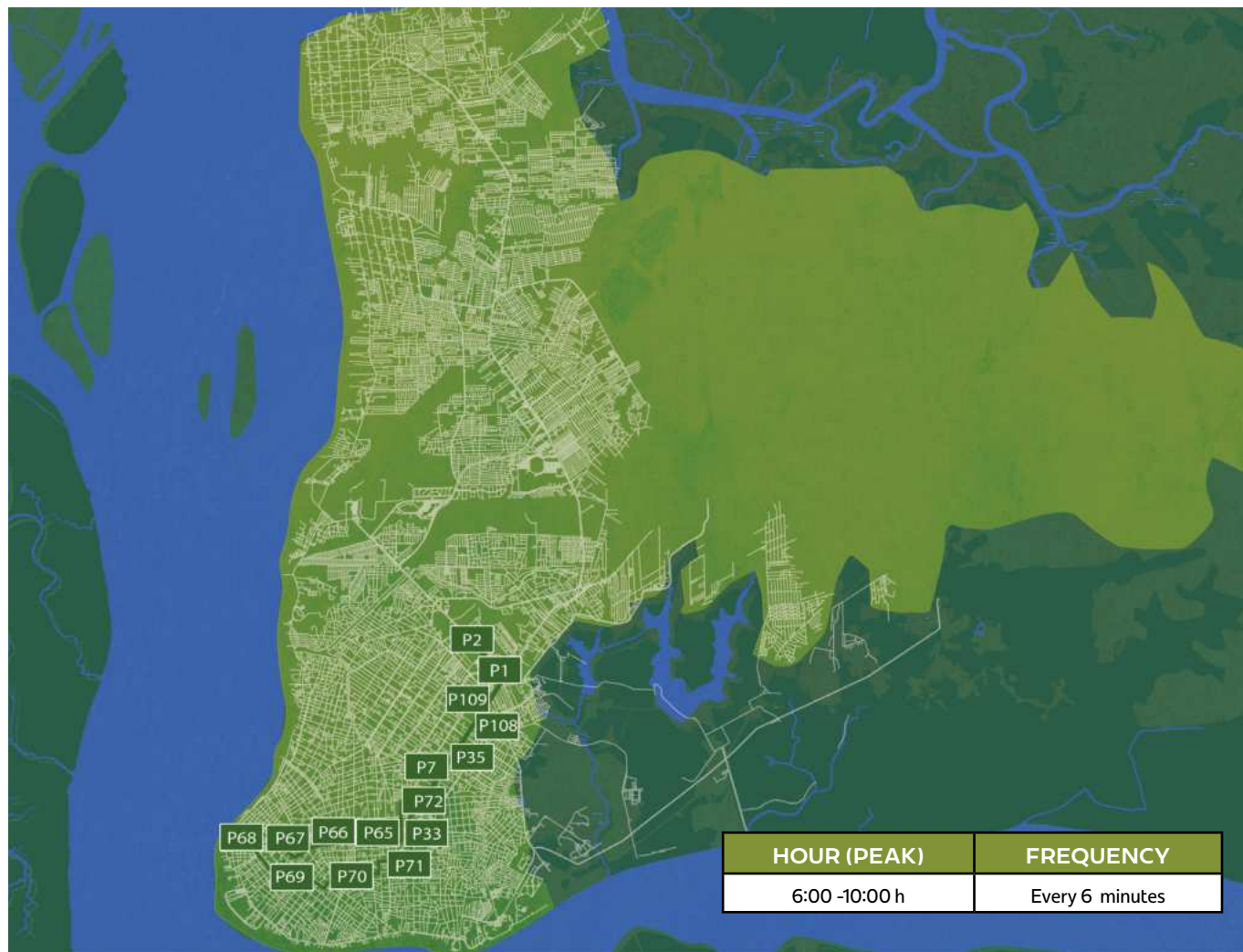
- P1 Start of the Line
- P2 End of the Lines
- P15 Av. Duque de Caxias x Tv. Antonio Baena
- P47 Av. Duque de Caxias x Tv. Mauriti
- P48 R. Antônio Barreto x Tv. 14 de Março
- P49 Av. Generalissimo x R. Boa Ventura da Silva
- P50 Av. Brás de Aguiar x Tv. Rui Barbosa
- P51 Av. José Malcher x Av. Assis de Vasconcelos
- P52 Blvd. Castilho França x Frutuoso Guimarães
- P53 R. Padre Champagnat x Praça Padre Frei Caetano Brandão
- P54 R. Doutor Assis x Av. Almirante Tamandaré
- P55 Av. Almirante Tamandaré x Tv. São Pedro
- P56 Av. Nazaré x Tv. Benjamin Constant
- P57 Av. Nazaré x Av. 14 de Março
- P58 Av. Gov Magalhães Barata x Tv. 9 de janeiro
- P108 Av. Almirante Barroso x Tv. Dr. Freitas



3. COP30 Dedicated Buses

LINE 9 | COP - Icoaraci

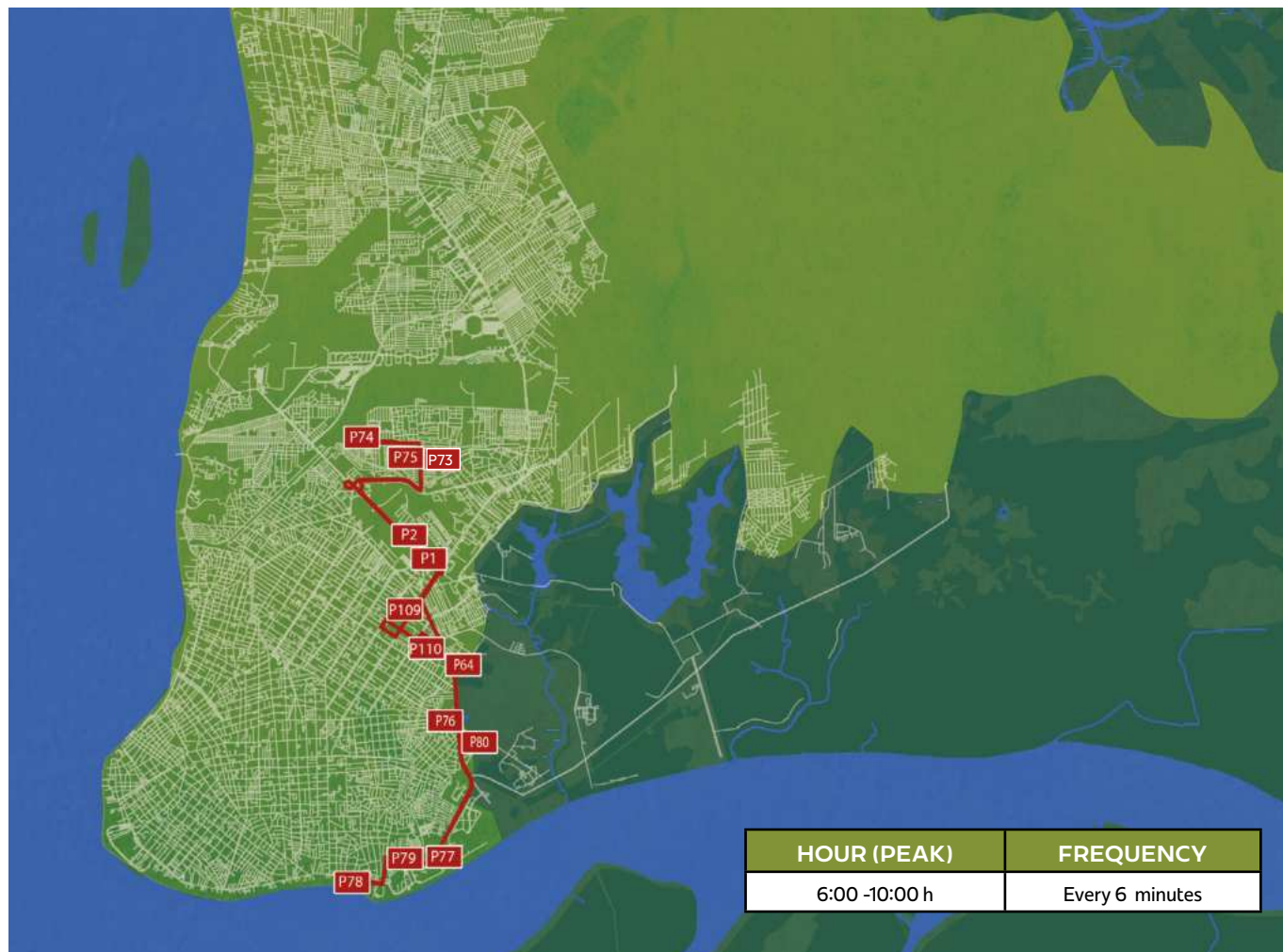
- P1 Start of the Line
- P2 End of the Lines
- P17 Julio César x Praça Dom Mario (Marex)
- P18 Av. Júlio César x Av. Brasil
- P59 Rod. Augusto Montenegro x Vila Monza
- P61 Tv. Carneiro da Rocha x R. Manoel Barata
- P63 Rod. Augusto Montenegro x Escola XV de Novembro
- P111 Rod. Arthur Bernardes x CIABA
- P112 Rod. Arthur Bernardes x Passagem da Pratinha



3. COP30 Dedicated Buses

LINE 10 | COP - Jurunas

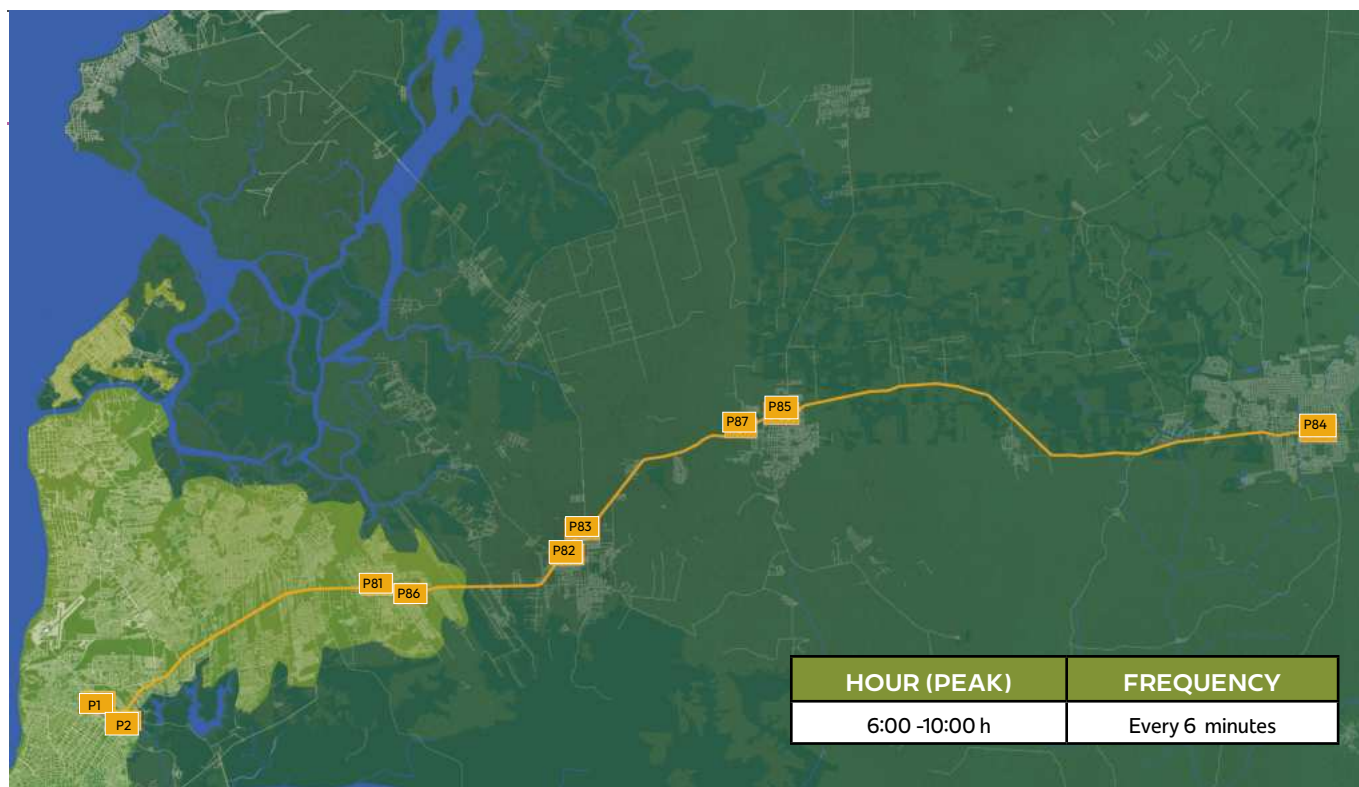
- P1 Start of the Line
- P2 End of the Lines
- P7 Av. Alm. Barroso x Tv. Timbó
- P33 Av. Almirante Barroso x Av. José Bonifácio
- P35 Av. Alm. Barroso x Tv. Vileta
- P65 Av. Conselheiro Furtado x Av. Alcindo Cacula
- P66 Av. Conselheiro Furtado x Tv. Rui Barbosa
- P67 Tv. Padre Eutiquio x R. Veiga Cabral
- P68 R. João Diogo x Praça da Bandeira
- P69 Praça Amazonas x Polo Joalheiro
- P70 Apinajés x Timbiras
- P71 José Bonifácio x Mundurucus
- P72 Av. Almirante Barroso x Praça da Leitura
- P108 Av. Almirante Barroso x Tv. Dr. Enéas
- P109 Av. Almirante Barroso x Bosque Rodrigues



3. COP30 Dedicated Buses

LINE 11 | COP - Marambaia-UFPA

- P1 Start of the Line
- P2 End of the Lines
- P64 Av. Perimetral x Embrapa
- P73 Av. Rodolfo Chermont x Av. Tavares bastos
- P74 R. da Mata x Av. Paragominas
- P75 Av. Rodolfo Chermont (Sentido Centro)
- P76 Escola de Aplicação - UFPA (Sentido Bairro)
- P77 Av. Perimetral x Portão 2 UFPA (Sentido Bairro)
- P78 Av. Bernado Sayão x Beira Rio Hotel
- P79 Av. Perimetral x Portão 2 UFPA (Sentido Centro)
- P80 Escola de Aplicação - UFPA (Sentido Centro)
- P109 Av. Almirante Barroso x Bosque Rodrigues Alves
- P110 Tv. Dr. Enéas x Perimetral



3. Ônibus Dedicados COP30

LINHA 12 | COP - Castanhal

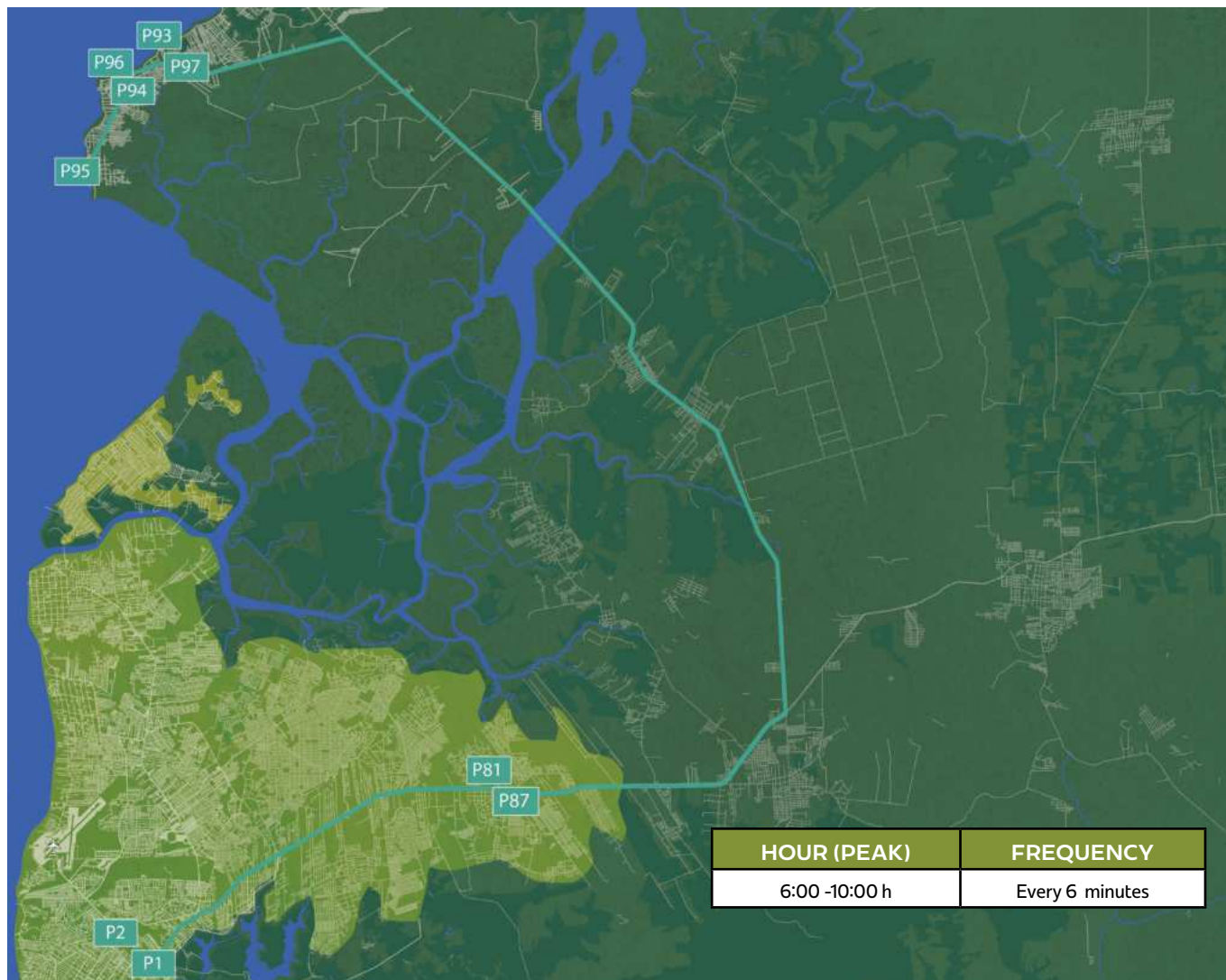
- P1 Início das Linhas
- P2 Fim das Linhas
- P81 BR-316 x R. Decouville
- P82 BR-316 x PA-406
- P83 BR-316 x Tv. José Amâncio
- P84 R. Sen. Antônio Lemos x Tv. Floriano Peixoto (Castanhal)
- P85 BR-316 x R. Doná Ivone Holanda
- P86 BR-316 x PA-391
- P87 BR-316 x R. da Cerâmica



3. COP30 Dedicated Buses

LINE 13 | COP - Benevides

- P1 Start of the Line
- P2 End of the Lines
- P36 Av. Alm Barroso x Pedro Amazonas
- P37 BR316 x Mix Importados
- P45 BR316 x Hollyday Inn
- P46 Av. Alm. Barroso x 2º BIS
- P81 BR-316 x R. Decouville
- P87 BR-316 x R. da Cerâmica
- P88 BR-316 x Av. Ricardo Borges
- P89 BR-316 x R. Francisco de Oliveira
- P90 PA-406 x Garden Hotel e Eventos (Benevides)
- P91 BR-316 x Praça Matriz - Ananindeua
- P92 BR-316 x Estr. da Providência



3. COP30 Dedicated Buses

LINE 14 | COP - Mosqueiro

- P1 Start of the Line
- P2 End of the Lines
- P81 BR-316 x R. Decouville
- P87 BR-316 x R. da Cerâmica
- P93 Av. 16 de Novembro x Rod. Augusto Meira Filho
- P94 Av. Beira Mar x Av. 16 de Novembro
- P95 Terminal Mosqueiro
- P96 Av. 16 de Novembro x Tv. Eurico Romariz
- P97 Av. 16 de Novembro x Chapéu dos Ventos



3. COP30 Dedicated Buses

LINE 15 | COP - Mosqueiro Vila

- P93** Av. 16 de Novembro x Rod. Augusto Meira Filho
- P94** Av. Beira Mar x Av. 16 de Novembro
- P95** Terminal Mosqueiro
- P96** Av. 16 de Novembro x Tv. Eurico Romariz
- P97** Av. 16 de Novembro x Chapéu dos Ventos
- P98** Av. Beira Rio x Estr. da Bateria
- P99** Av. 16 de Novembro x Condomínio San Damião

- P100** Av. 16 de Novembro x Pass. Sambaibas
- P101** Av. 16 de Novembro x Rod. BL 19
- P102** Estr. do Caruara x Alm. Quariquera
- P103** Av. 16 de Novembro x Av. Rio Branco
- P104** Av. 16 de Novembro x R. Antonio Lemos
- P105** Av. 16. de Novembro x R. Jd. Guanabara
- P106** Av. Beira Mar x Praça do Patriarca

4.Green Zone Transport

Taxi – Operation and location informations



During the event, there will be designated pick-up and drop-off areas for taxi near the access gates at Parque da Cidade.

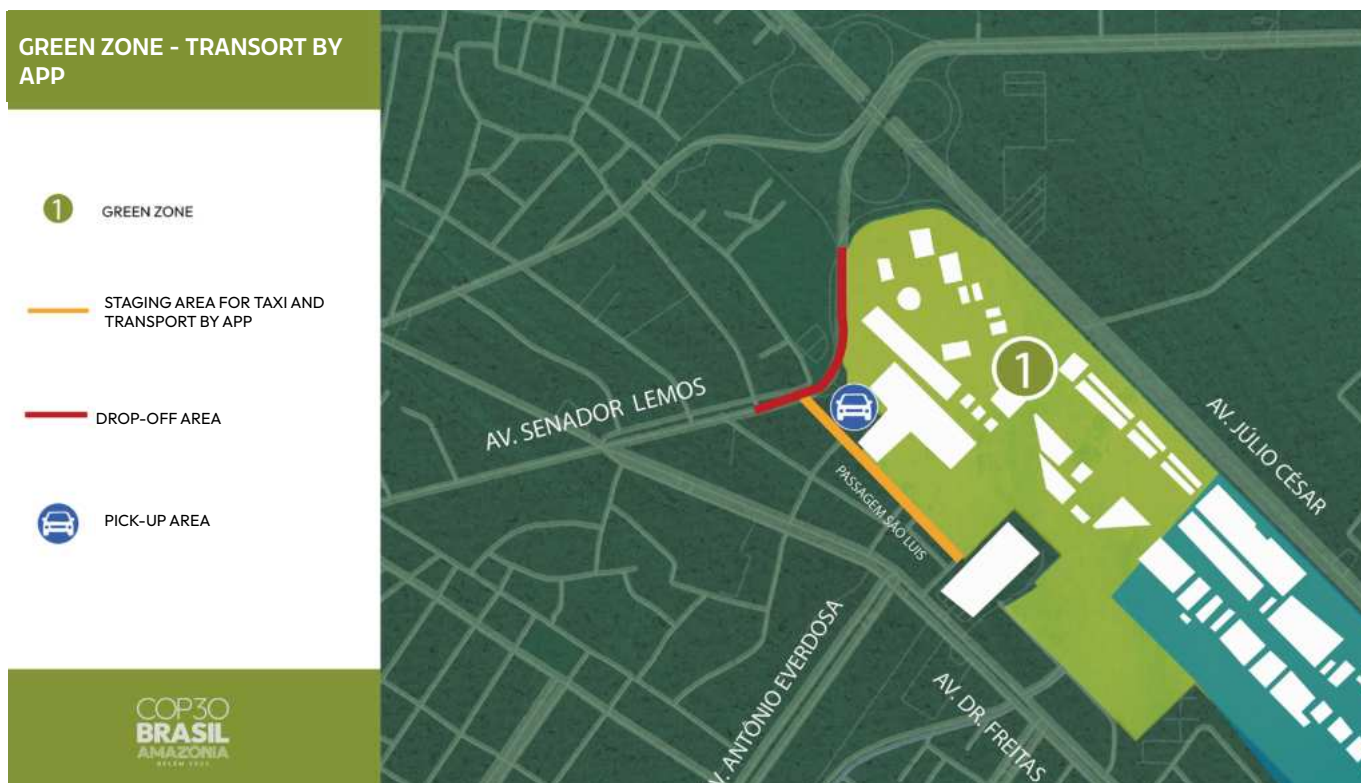
Boarding: the user must go to the internal boarding area of the Green Zone (main entrance Avenida Senador Lemos)

Disembarkation: the user must disembark at the main access area of the Green Zone, on Avenida Senador Lemos.

24-HOUR OPERATION

4.Green Zone Transport

Transport by App – Operation and location informations



During the event, there will be designated pick-up and drop-off areas for app transport near the access gates at Parque da Cidade.

Boarding: the user must go to the internal boarding area of the Green Zone (main entrance Avenida Senador Lemos)

Disembarkation: the user must disembark at the main access area of the Green Zone, on Avenida Senador Lemos.

Uber – Download the app or go to: <https://www.uber.com/br/en/>

99 – Download the app or go to: <https://99app.com/>

24-HOUR OPERATION



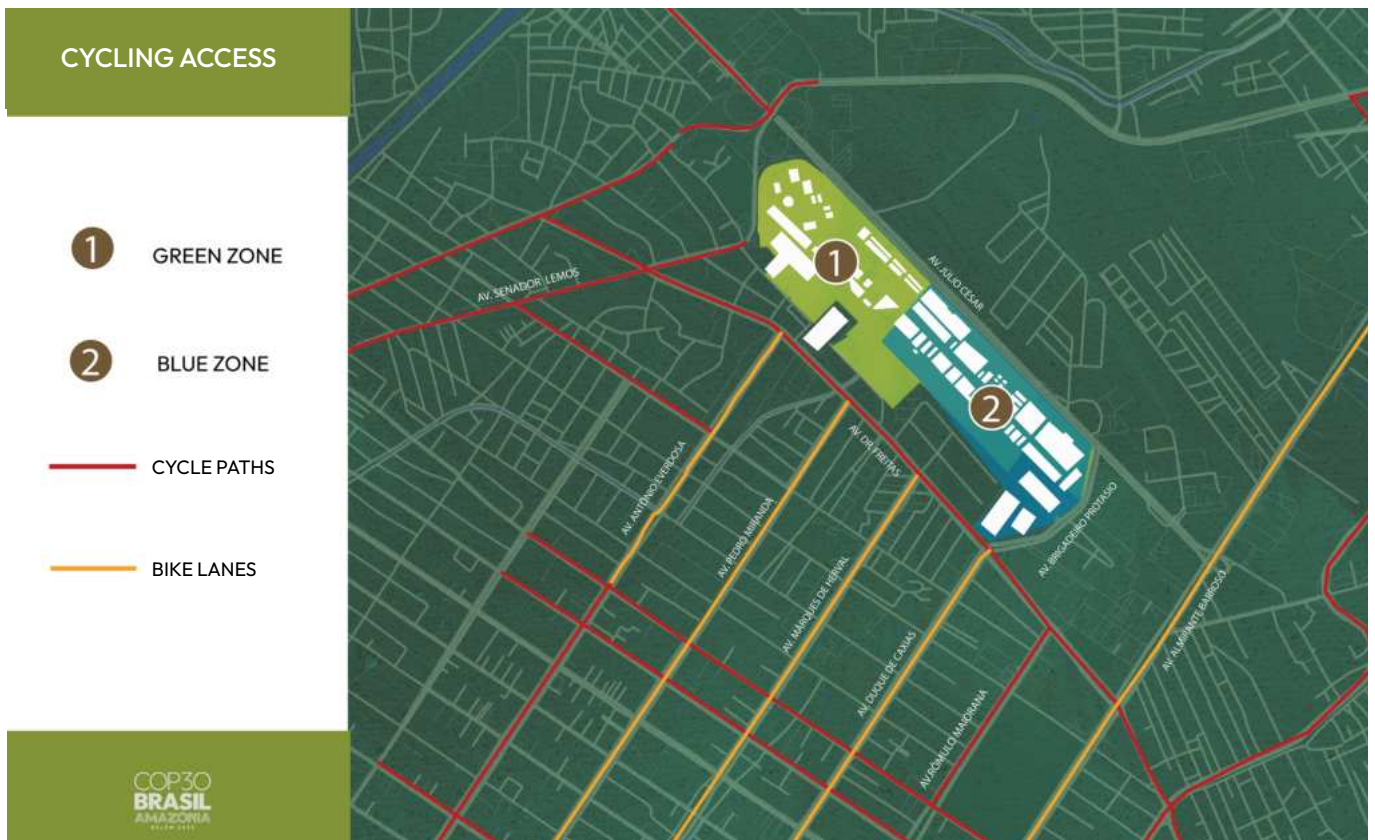
United Nations
Climate Change



GOVERNO DO
BRASIL
DO LADO DO POVO BRASILEIRO

4. Transporte Green Zone

Mobilidade Ativa – Informações da operação e local



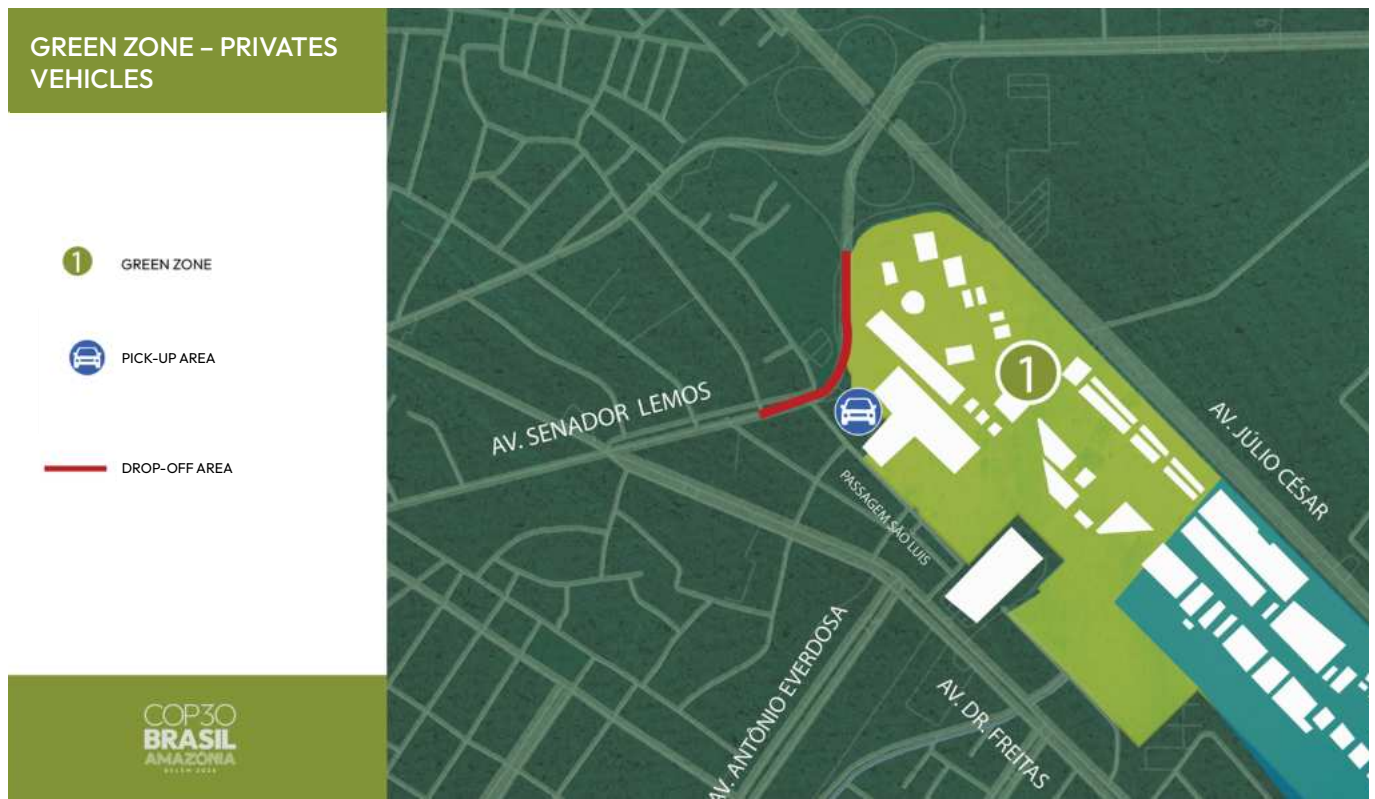
Belém has a wide network of bike paths and bike lanes that surround the City Park, facilitating access by sustainable means. During COP30, participants and visitors will be able to opt for their own bicycles, shared bicycles and electric scooters, available at strategic stations around the park. Bike racks will be installed near the entrance to the Green Zone, on Avenida Senador Lemos, offering safety and convenience to users of active mobility.

During the event, participants will have a discount bonus for using the scooter service on the first three trips.

Electric scooters and bicycles: Download the [Jet Scooter Sharing](#)

4.Green Zone Transport

Private Vehicles – Pick-up and drop-off areas



There will be no parking at the event site. That is why we recommend using the regular buses of the municipal lines. If you use your own vehicle (car, bus or van), the boarding/ disembarking will be at Av. Senator Lemos. The area is intended only for boarding and disembarking, without permanence.

4.Green Zone Transport

Public Bus – Operation information and locations



The Belém City Hall buses are an option for those who are staying in places outside the coverage of the dedicated buses. The nearest indicated disembarkation point to the event is Av. Almirante Barroso, between Av. Júlio César and Av. Dr. Freitas.

For more information on itineraries and fares:

<https://seguranca.belem.pa.gov.br/linhas/>



United Nations
Climate Change

COP30
BRASIL
AMAZONIA
BELÉM 2025

GOVERNO DO
BRASIL
DO LADO DO POVO BRASILEIRO